

H50 Spot Light Targeting System

The Laser shows the target point of the wire bonding tool.

- Minimum point size 25µm
- Power 0,5mW
- Wavelength 635nm (red)

Mount the Spotlight holder on the Microscope holder Figure 1 (3)
Beam-Distance to Bondlevel is 100 mm

Adjust Spotlight focus

Switch light off to locate Laser spotlight.

Loose Knob (1) for rough adjustment.

If you don't find a red point the distance from laser to surface is wrong.

If the point too big adjust the distance by move laser up or down.
(picture 1 / 2)

If necessary adjust voltage on power supply
for more or less brightness. (picture 3)

Adjust Spotlight to correct position

Do first bond without y-way and

adjust with screws (2 / 3) Laser Point to the Bond.
(picture 4 / 5)

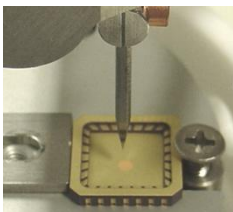
To focus spot adjust knurled screw (4)

If you do not can find the laser point, please darken the room.

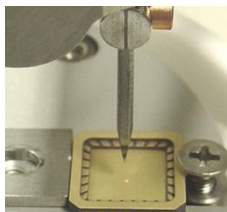
The Laser has the focus point on 100mm. Move from the laser surface with the laser up, around 100mm you should see a tiny dot.



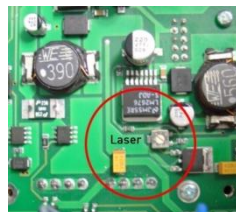
Picture 1



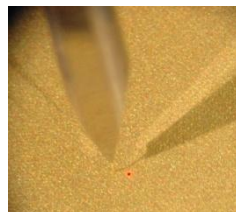
Picture 2



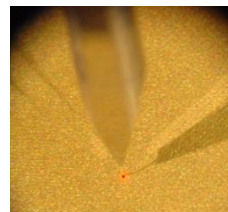
Picture 3



Picture 4



Picture 5



ATTENTION ! Don't stare into the beam. Direct viewing into the beam or reflected beam can cause permanent eye damage. Laser class 2 / Po = 1 mW / r = 635 nm